

*Pritchard House
In-Patient
Treatment Program*

Native Addictions Council of Manitoba's Pritchard House Rehabilitation Centre is the longest running Native staffed treatment centre in Manitoba.

More than 90% of the programming is based on Native Cultural traditions, with the remainder of the program consisting of methods chosen from current addiction treatment techniques.

To apply for admission to Pritchard House's 32 day program, contact the Pritchard House Intake office at 1-204-586-8396.

The Intake office will supply a referral package and answer any questions concerning admission to the program.

Office Hours:

8:30 am—4:30 pm

Monday to Friday

The mission of Native Addictions Council of Manitoba is to provide traditional healing services to our people through holistic treatment of addictions.

The belief of N.A.C.M. is that each person has the right to wellness, success and self-determination.

Native Addictions
Council of Manitoba

Pritchard House
160 Salter Street
Winnipeg, MB R2W4K1

Phone: 204-586-8395
Fax: 204-589-3921

web: www.mts.net/~nacm

Native Addictions
Council of Manitoba

**Pritchard
House**

**A C E N T R E F O R
T H E T R E A T M E N T
O F A L C O H O L /
D R U G A B U S E A N D
A D D I C T I O N S .**

Phone: 204-586-8395

Fax: 204-589-3921

Web: www.mts.net/~nacm

E-mail: nacm@escape.ca



**C . C . H . S . A .
A c c r e d i t e d 2 0 0 0 - 2 0 1 1**

Pritchard House Topics—Procedures— Organizational Structure

Pritchard House relies on a combination of Native traditional teachings and current findings in addictions research to provide help to the people enrolled in the program.

The program meeting schedule includes, but is not limited to the following topics:

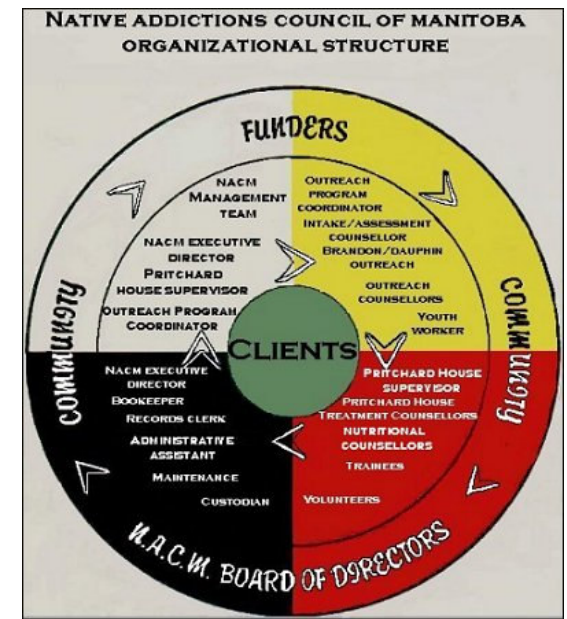
- Native teachings
- Life-skills
- Anger management
- Parenting
- Lifestyle assessment problem identification
- Resources available both in the addictions field and in other areas.
- The physical, emotional and spiritual consequences of addictions in any form.
- The impact of the Residential School system on Native families and cultural traditions.
- Relaxation techniques and methods of reducing overall anxiety .
- Pride in Native identity.

Referral Procedures:

Intake for Pritchard House is conducted through the intake office, which is open from 8:30 am—4:30 pm Monday to Friday. A summary of these procedures as follows:

- Contact intake and request a referral package. The package contains a referral sheet and a medical assessment form, both of which must be completed and returned before admission is confirmed.
- Admission dates vary so please contact the intake to learn to start dates available.
- Additional program information is available—a summary of the house rules, sample program etc.—contact the Pritchard House Intake for more details.
- Upon admission, all clients are expected to read and sign a copy of the house rules. Failure to comply with the rules will result in immediate discharge.
- When the referral package is returned, a representative of the intake office will contact the referral agent to confirm the admission date.
- Referral agents are expected to arrange transportation to and from the facility. Intake must be informed of these arrangements.
- Clients are required to provide identification when they are admitted to Pritchard House.

Note: As of January 2002, Pritchard House is now 32 days in length.



N.A.C.M. is dedicated to providing the finest care available to our clientele. We will provide assistance to anyone who is earnestly seeking to regain the health that is everyone's birthright.

Staff of Native Addictions Council of Manitoba

Native Addictions
Council of Manitoba

Pritchard House
160 Salter Street
Winnipeg, MB R2W4K1

Phone: 204-586-8395
Fax: 204-589-3921

web: www.mts.net/~nacm